



# GAT MONTHLY MEMBERSHIP PROGRESS REPORT

Results as of: 4/30/2023

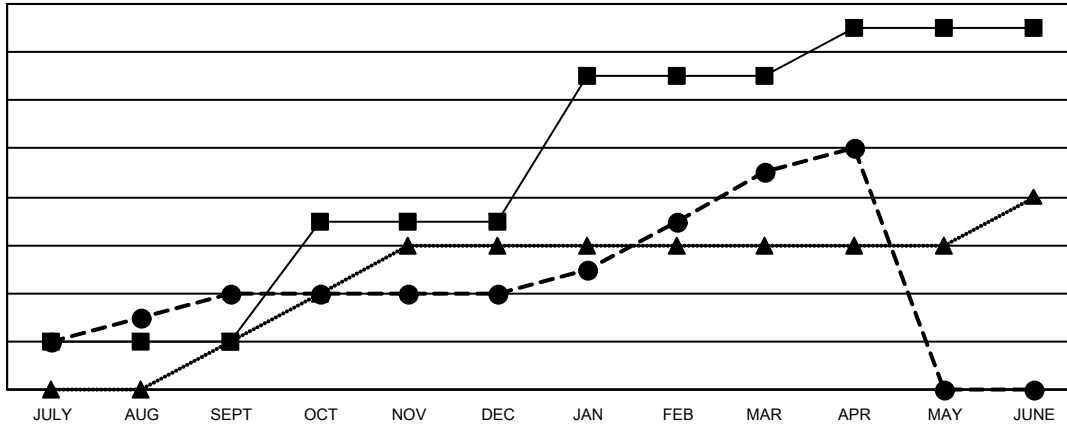
## Multiple District A

LOCATION: ONTARIO

Clubs			
RESULTS FOR 2022-2023			
QUARTER	NEW CLUB GOAL	NEW CLUBS	DROPPED CLUBS
JULY/AUG/SEPT	2	4	3
OCT/NOV/DEC	5	0	6
JAN/FEB/MAR	6	5	2
APR/MAY/JUNE	2	1	1

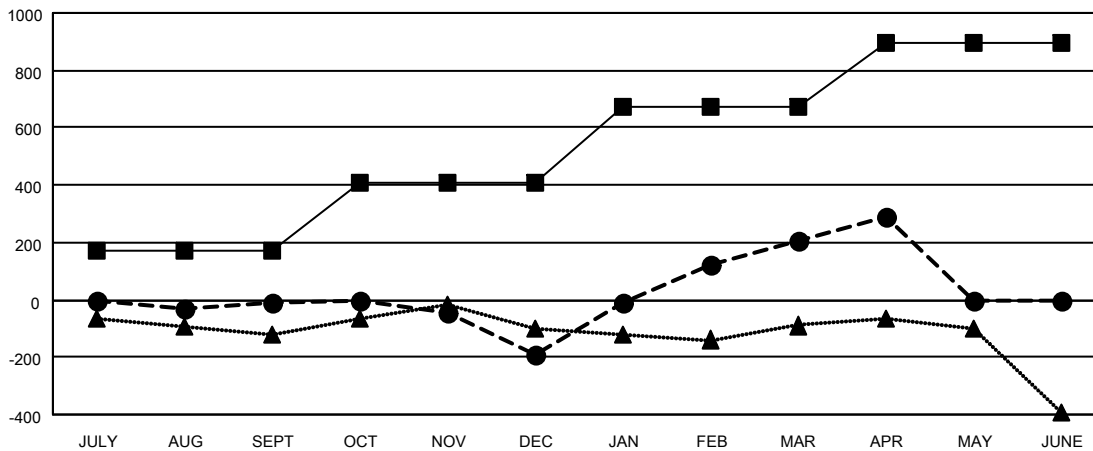
Members			
RESULTS FOR 2022-2023			
QUARTER	MEMBER GROWTH NET GOAL	MEMBER GROWTH ACTUAL	DROPPED MEMBERS ACTUAL (including transfers)
JULY/AUG/SEPT	170	372	331
OCT/NOV/DEC	240	479	605
JAN/FEB/MAR	260	732	282
APR/MAY/JUNE	225	217	114

GOALS AND ACTUAL NEW CLUBS CUMULATIVE



- CURRENT YEAR GOALS FOR NEW CLUBS
- CURRENT YEAR ACTUAL NEW CLUBS
- ▲- LAST YEAR ACTUAL NEW CLUBS

GOALS AND ACTUAL MEMBERS CUMULATIVE



- MEMBER GROWTH NET GOAL
- MEMBER GROWTH ACTUAL
- ▲- LAST YEAR MEMBERSHIP ACTUAL

DROPPED CLUBS: 12	
<b>DROPPED MEMBERS</b>	
DECEASED	187
CLUB CANCELLED	9
OTHER	1,136
<b>TOTAL</b>	<b>1,332</b>

345 CLUBS OF 538 ADDED 1 OR MORE NEW MEMBERS

[CLICK HERE FOR CUMULATIVE MEMBERSHIP DATA](#)

GENDER DISTRIBUTION	
MALE	8,028 (64.39%)
FEMALE	4,439 (35.60%)
NON BINARY	0 (0.00%)
PREFER NOT TO ANSWER	1 (0.01%)
<b>TOTAL FAMILY UNIT MEMBERS</b>	<b>2,223</b>
<b>FAMILY MEMBERS PAYING HALF DUES</b>	<b>1,150</b>